

# Din Rail Mounted Moulded Case Circuit Breakers (MCCB) MB125-2 Series



2 Pole



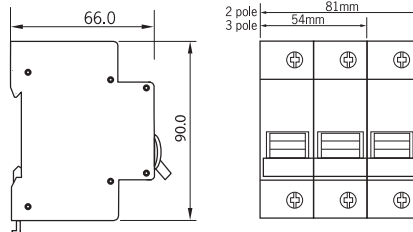
3 Pole

**PRODUCT LIABILITY**  
\* Terms & Conditions Apply \*  
**RM2,000,000.00**

**60 MONTHS WARRANTY**  
\* Terms & Conditions Apply \*

Type	rating (A)	cat. no.
2P		
Width	16	MB216N
3 module	20	MB220N
54 mm	32	MB232N
	40	MB240N
	50	MB250N
	63	MB263N
	80	MB280N
	100	MB2100N

Type	rating (A)	cat. no.
3P		
Width	16	MB316N
4.5 module	20	MB320N
81 mm	32	MB332N
	40	MB340N
	50	MB350N
	63	MB363N
	80	MB380N
	100	MB3100N



## Technical Data

### Description

- To protect circuit against overload and short circuit in the electrical distribution systems.
- Use in domestic, commercial and light industrial installation.

### Electrical

Design according to	IEC 60947-2
Rated voltage (Ue)	240/415V~
Rated current (In)	16,20,32,40,50,63,80,100A
No. of poles	2,3
Utilization category	Cat A
Rated ultimate short circuit breaking capacity (Icu)	10kA
Service short circuit breaking capacity (Ics)	7.5kA
breaking capacity (Ics=75%Icu)	
Ref. calibration temp.	30 °C
Rated insulation (Ui)	690V~
Frequency	50/60Hz
Tripping mechanism	Fixed thermal & magnetic
Degree of protection	IP20
Polution Degree	3
Rated impulse voltage (Uimp)	6kV
Electrical and mechanical endurance	10,000 operating cycles

### Mechanical

Terminal capacity	1-35mm <sup>2</sup>
Mounting installation	DIN rail EN 50022

## 24 Hour Time Switch (Q24TS)



Type	cat. no.
Analogue	Q24TS
Width	
3 module	
54mm	
Packing size	
box /carton	1/30

**PRODUCT LIABILITY**  
\* Terms & Conditions Apply \*  
**RM2,000,000.00**

**12 MONTHS WARRANTY**  
\* Terms & Conditions Apply \*

## Technical Data

### Electrical

Rated voltage	240V~
Rated current (contact)	16A
Power reserve	150h
Frequency	50Hz

### Mechanical

Terminal capacity	1-4mm <sup>2</sup>
Mounting installation	DIN rail EN 50022

### Dimension

